

Furnace

BUYING GUIDE



Make Your Decision a Breeze

Welcome to our comprehensive “Furnace Buying Guide.” This guide will be your first step in navigating the world of home heating systems. Our Five Star Home Services experts have created this guide to assist you in selecting the perfect furnace.

Buying Guide Includes:

- ✦ When to purchase a new system
- ✦ What factors to consider
- ✦ The estimate and installation process overview



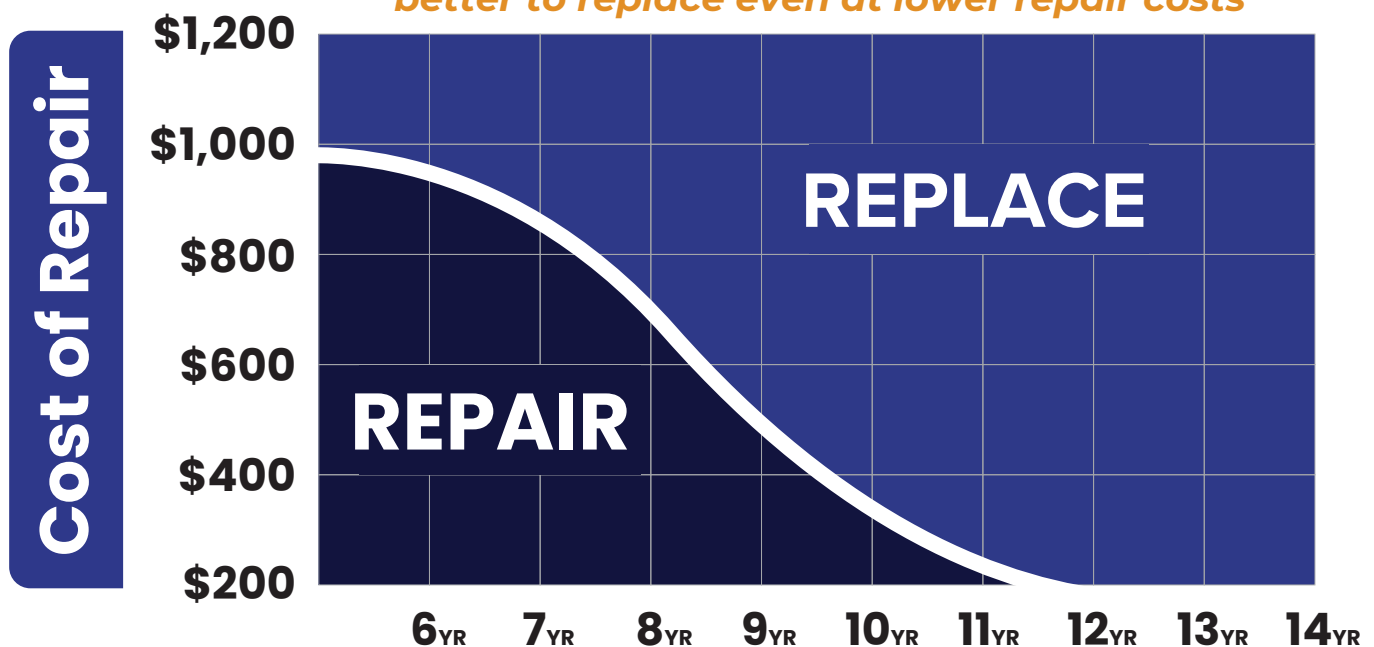
Should I Buy a New Furnace?

To help make the decision of whether or not to purchase a new furnace easier, compare the cost of repair versus replacement.

When to Repair or Replace

Pouring money into a failing furnace can be more costly than replacing it, especially if frequent repairs are needed. Upgrading to a more energy-efficient system can lead to long-term savings through reduced repair costs and energy expenses.

As the system ages, it becomes better to replace even at lower repair costs



Benefits to Consider

Here are the top three reasons to purchase a new furnace

- ✓ Prevents costly, constant repairs
- ✓ Saves money by working at peak efficiency
- ✓ Enhanced comfort with more consistent heating

What Factors to Consider

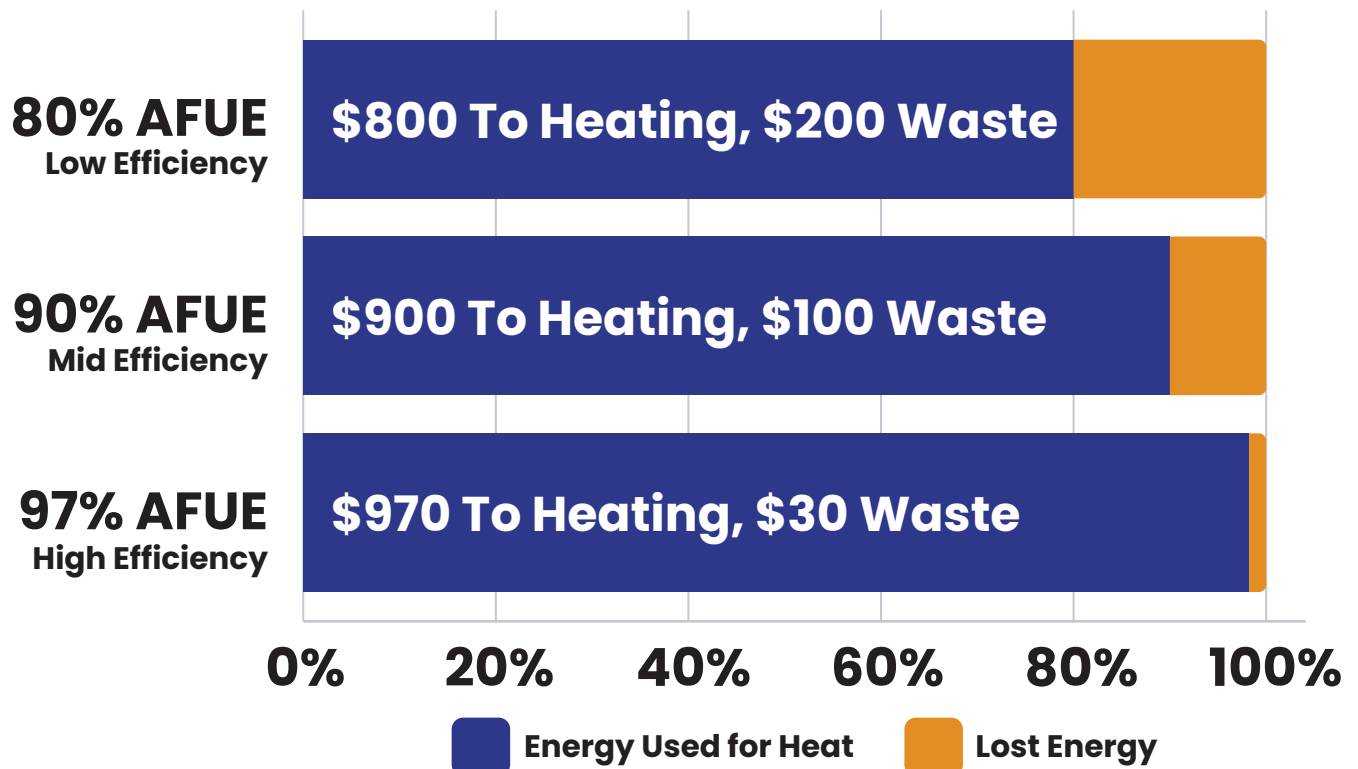
It's important to consider the energy efficiency, unit sizing, and stages for cost-effective and sustainable operation when buying a furnace.



Efficiency Rating: What To Know

AFUE stands for Annual Fuel Utilization Efficiency

Your furnace's efficiency matters, as more energy is wasted in low-efficiency systems. The higher your furnace's efficiency rating (measured in AFUE), the more comfort and savings you can enjoy.



Sizing: What You Should Know

Furnace sizing, measured in British Thermal Units (BTUs) per hour, is crucial for efficient heating, comfort, and cost-effectiveness. Furnaces typically range from 40,000 to 140,000 BTUs, depending on home size, insulation, and climate. Proper sizing prevents uneven heating, high energy bills, and excessive wear.

Many furnaces are incorrectly sized, leading to inefficiencies. A qualified HVAC tech should perform a manual load calculation, to ensure the correct furnace is installed.

Square Footage	BTU
Under 1,200	40,000 – 60,000
1,200 – 2,400	60,000 – 100,000
2,400 – 3,500	100,000 – 140,000



**BTU subject to change based off of ductwork size and other factors*

Stages: What You Should Know

The number of stages impacts the furnace efficiency and heating speed. The three main stage options are Single-Stage, Two-Stage, and Modulating.



Single-Stage

- ✔ Cost-effective
- ✔ Simple operation
- ✔ Easy maintenance



Two-Stage

- ✔ Greater efficiency
- ✔ Enhanced comfort
- ✔ Quieter operation



Modulating

- ✔ Peak efficiency
- ✔ Supreme comfort
- ✔ Ultra-quiet

What to Look for in a Contractor

Choosing a good local HVAC contractor to analyze, install, and maintain your home comfort equipment can feel overwhelming at times. Nevertheless, knowing what to expect and how a professional should conduct themselves in your home is the best way to empower yourself and make the most well-informed decision. Knowledge is power, after all.

Focus Should Always Revolve Around You

Home comfort is a very individualized experience. Everyone has unique preferences. Because of this, the focus should always revolve around you. This deserves your HVAC expert's utmost attention. By taking the time to truly listen and understand your unique comfort concerns, issues, and desires, we are able to deliver an experience that always meets our customer's satisfaction.

Every Home Is Unique

Your home is unique, with its own needs. When it comes to heating, air conditioning, and humidity control solutions, you need someone who understands this. For your home's specific needs and requirements, it is essential a professional perform a manual load calculation on-site consistently, ensuring complete satisfaction every time.

You Deserve to Be Informed

To make the most well-informed decision, you need a comprehensive understanding of the proposed solutions. You need as much information about the existing system possible and all possible alternatives. This includes receiving thorough education on their respective features and benefits.

Techs and Installers Are Guests In Your Home

Your comfort throughout the process is the utmost importance. You should be confident that every guest in your home involved in this process is a verified, W2, insured employee of the company you have trusted to help you. Additionally, everyone is fully insured, giving you added peace of mind.

It's Always Your Choice!

We believe every customer deserves the chance to make a conscious choice when purchasing a new HVAC system. Homeowners should never feel pressured. Rather than persuading a customer, we strive to ensure everyone has all the information, confidence, and comfort they need.

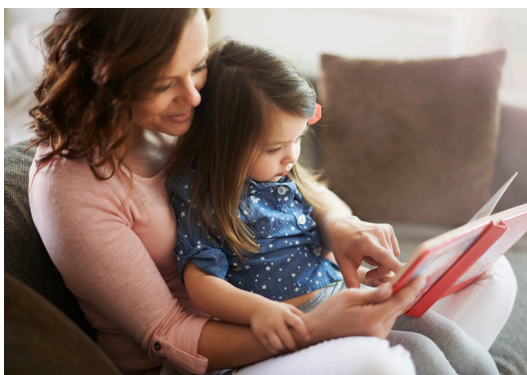
What to Expect

At Five Star we make the estimate and installation process simple. Getting a new furnace doesn't have to be complicated.

Estimates

Estimates are free. During the estimate process, a professional will visit your home to evaluate and recommend the best furnace choices for you.

- ✔ Measure home for optimal system size (load calculation)
- ✔ Listen to your home comfort needs and review customized system options
- ✔ Discuss installation process



Installation

During the installation process, trained technicians will set up the selected furnace in your home to ensure optimal performance.

- ✔ Put on shoe covers and add walkway cloths to protect floors
- ✔ Remove old furnace and install new
- ✔ Walkthrough your new equipment and review any remaining questions

The Five Star Difference

Five Star Home Services is a top choice for furnace estimates and installation due to our skilled technicians, transparent estimates, and commitment to customer satisfaction. Trust us for reliable service from estimates to installation.



Why Choose Five Star



Same Day Service



Family-Owned Since 1972



Next Day Installation



Over 15,000 Five Star Reviews

Ready for an Estimate?

☎ 833.405.8009

🌐 JustCallFiveStar.com

SCHEDULE

